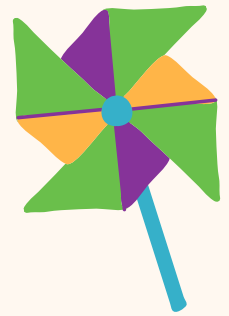


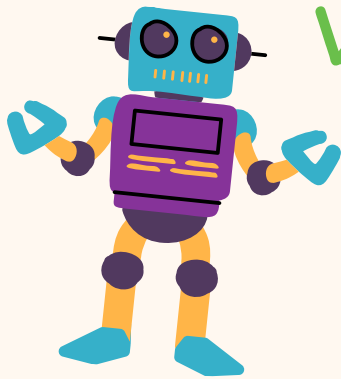
LifeWise StL
Life Skills for Better Futures



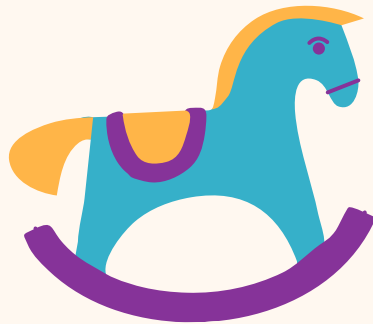
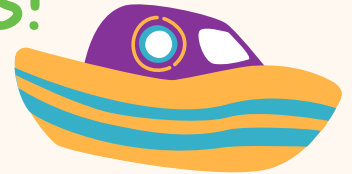
TRIVIA NIGHT



When we were kids!



SATURDAY
NOVEMBER 11, 2023
THE PAVILION AT LEMAY



2023 | sponsorship opportunities

Supporting Literacy Programs at LifeWise StL

August 2023

Dear Community Supporter,

LifeWise StL's vision is to see all people in the region have access to the opportunities and support that allow them to achieve economic well-being. This vision is fulfilled through our unique educational programming fused with personalized and supportive coaching. From infants to seniors, we help people live wiser at every stage of life.

On **Saturday, November 11**, we will host our **Annual Trivia Night** at The Pavilion at Lemay on the grounds of Jefferson Barracks Park. Join us for a bit of trivia nostalgia, as we recall the time "when we were kids!"

Trivia Night proceeds will fund our literacy-focused youth programs: Young Scholars after-school program, Freedom School Literacy Summer Camp, and LifeWise Academy for teens. Our Academy provides academic enrichment, social-emotional support, life skills, and job readiness to teens, ensuring they graduate and are prepared for post-secondary education. Our Young Scholars receive tutoring and participate in enriching activities in a safe and nurturing environment. **Our goal is to equip our youth with the skills they need to soar!**



How can you help? Purchase a sponsorship or donate an auction item that attendees would enjoy. We know that there are many demands on your generosity, and we thank you for considering our request. With your help, we can increase our impact on the children and community we serve.

Kind regards,

SCOTT E. WALKER
PRESIDENT/CEO

JENNIFER L. MARCH
DEVELOPMENT & ASSOCIATE EXECUTIVE DIRECTOR

CONTACT

Greta Buck
gbuck@lifewisestl.org
314.260.6369



LIFEWISESTL.ORG



SPONSORSHIP

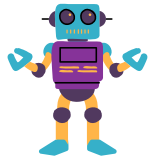
LEVELS + BENEFITS



\$5,000

LITERACY CHAMPION

- Logo with link on LifeWise StL website and event e-blasts
- Logo on printed materials and event signage
- Recognition on social media
- 2 Tables of 8



\$2,500

LITERACY HERO

- Logo with link on LifeWise StL website
- Logo on printed materials and event signage
- Recognition on social media
- 1 Table of 8



\$1,000

LITERACY LEADER

- Logo on printed materials, website, and event signage
- Recognition on social media
- 4 tickets to LifeWise StL Trivia Night



\$500

LITERACY FRIEND

- Logo on printed materials, website, and event signage
- Recognition on social media
- 2 tickets to LifeWise StL Trivia Night



\$350

BEVERAGE SPONSOR

2 sponsorships available

- Logo on screen during one round, on printed materials, and on event signage



\$250

ROUND SPONSOR

8 sponsorships available

- Logo on screen during one round, on printed materials, and on event signage



\$100

GENERAL DONATION

- Logo on printed materials

BONUS SPONSORSHIP

BENEFITS



LifeWise StL partners with the Missouri Neighborhood Assistance Program (NAP) and Youth Opportunities Program (YOP), which provide tax credits to donors. For companies or individuals wanting to improve their bottom line while making a positive contribution to their community, this is a win-win opportunity. **Sponsorships of \$500+ (less the value of goods or services received)** will be eligible for NAP or YOP credits. See example below for how this could impact you.

DONATION AMOUNT	\$5,000	\$2,500	\$1,000	\$500
IN RETURN, YOU GET...				
Missouri tax credit (50%)	-\$2,500	-\$1,250	-\$500	-\$250
Missouri tax savings*	-\$135	-\$68	-\$27	-\$14
Federal tax savings*	-\$550	-\$75	-\$110	-\$55
NET after-tax cost to you*	\$1,815	\$907	\$363	\$181

**Consult your tax advisor to determine your exact savings.*



Prefer to pay online?

2023 TRIVIA NIGHT

SPONSORSHIPS & TICKETS

- \$5,000 Literacy Champion
- \$2,500 Literacy Hero
- \$1,000 Literacy Leader
- \$500 Literacy Friend
- \$300 Beverage Sponsor – 2 sponsorships available
- \$250 Round Sponsor – 8 sponsorships available
- \$100 General Donation
- \$240 Table of 8
- \$30 Individual Ticket

CONTACT INFORMATION

Please print business name exactly as you wish it to appear on promotional materials.

INDIVIDUAL OR BUSINESS _____

CONTACT _____

ADDRESS _____

CITY _____ STATE _____ ZIP _____

EMAIL _____ PHONE _____

AUCTION ITEM DONATION INFORMATION

Please submit donations by October 24, 2022.

- My donation is enclosed.
- Please pick up my donation.

DESCRIPTION _____

VALUE _____ PICK UP INSTRUCTIONS _____

PAYMENT METHOD

I/We pledge to sponsor at the level indicated above.

- My check is enclosed, payable to LifeWise StL.
- Please charge my credit card.
- Please bill me.

CREDIT CARD NUMBER _____ TYPE _____ SEC. CODE _____ EXP. DATE _____

NAME AS IT APPEARS ON CARD _____

BILLING ADDRESS (if different from above) _____

SIGNATURE _____

REGRETS

I am unable to sponsor, but I would like to donate \$ _____

QUESTIONS

For questions, contact Greta Buck, at gbuck@lifewisestl.org or 314-260-6369

Please submit auction item donations by October 24, 2023

Return to LifeWise StL - 1321 S. 11th St., St. Louis, MO 63104, Attn: Greta Buck

We appreciate your support!