

SPRING BLISSING

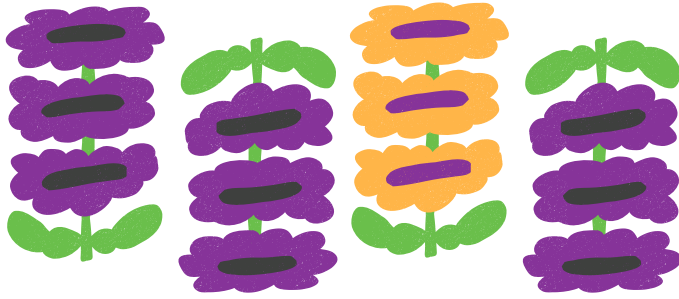
BRUNCH & AUCTION
APRIL 12, 2025



BENEFITTING WOMEN'S
ECONOMIC AND EMOTIONAL
WELLNESS PROGRAMMING

2025 | SPONSORSHIP
OPPORTUNITIES





February 2025

Dear Community Supporter,

LifeWise StL provides pathways out of poverty for some of the most under-resourced members of our St. Louis community. **Of the over 4,000 individuals we impact annually, the majority are women.** Our approach is unique: we don't just provide services, we build partnerships. By working hand-in-hand with women through education and coaching, we empower them to gain knowledge and skills, build relationships, access resources, and enhance their overall well-being. Our programs are designed to **create multi-generational impact for our participants**—from baby girls to grandmothers—while improving the societal conditions that can hinder their success. Through holistic programs establishing the roots of **emotional and physical health, education, and financial stability**, we empower our participants to grow and flourish in the future they envision.

We invite you to join us on **Saturday, April 12 for our annual Spring Bling Brunch & Auction!** This is an opportunity to help us **foster women's growth!** Guests can expect an empowering atmosphere, a delicious brunch, and an auction featuring an array of curated gift baskets, exceptional experiences, beautiful accessories, and more.

How can you help? Purchase a sponsorship or donate an auction item. We know that there are many demands on your generosity, and we thank you for considering our request. With your help, we can increase our impact on the women and community we serve.

Kind regards,

SCOTT E. WALKER
PRESIDENT/CEO



CONTACT

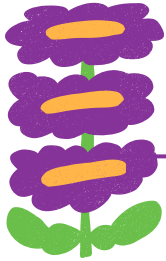
Greta Buck
gbuck@lifewisestl.org
314.260.6369

GRETA BUCK
DIRECTOR OF DEVELOPMENT & MARKETING

LIFEWISESTL.ORG

SPONSORSHIP | LEVELS + BENEFITS

With your support, we can continue helping women thrive in growth with our transformational programming.



**\$5,000
THRIVE**

BENEFITS TO YOUR ORGANIZATION



EXAMPLE OF WHAT YOUR SUPPORT PROVIDES

- Logo on LifeWise StL website
- Logo on printed materials and event signage
- Logo on guest swag bags
- Recognition on social media
- One Table of eight

LifeWise Academy (after school teen enrichment program) for one student for an entire year.

**\$2,500
FLOURISH**

- Logo on LifeWise StL website
- Logo on printed materials and event signage
- Recognition on social media
- One Table of eight



Early Childhood Center education for 2 months so parents can work.



**\$1,000
BLOOM**

- Logo on LifeWise StL website
- Logo on printed materials and event signage
- Recognition on social media
- Four Tickets

LifeWise Freedom School Literacy Camp for one scholar for six weeks

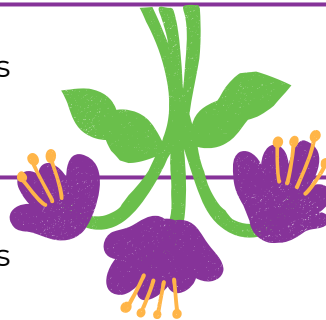
**\$500
PLANT**

- Logo on LifeWise StL website
- Logo on printed materials and event signage
- Recognition on social media
- Two Tickets

Economic Wellness class for ten participants for five weeks (with childcare)

**\$250
BUD**

- Logo on printed materials
- One Ticket



Senior Companion visits for six weeks for an isolated senior adult

**\$100
ROOT**

- Logo on printed materials

Health & Wellness class for one participant (includes childcare)

ADDITIONAL OPPORTUNITY

- Donate 250 items for goody bags, and get your product into the hands of all attendees



BONUS

SPONSORSHIP BENEFITS

LifeWise StL partners with the Missouri Neighborhood Assistance Program (NAP) and Youth Opportunities Program (YOP), which provide tax credits to donors. For companies or individuals wanting to improve their bottom line while making a positive contribution to their community, this is a win-win opportunity. **Sponsorships of \$500+ (less the value of goods or services received)** will be eligible for NAP or YOP credits. See example below for how this could impact you.

| DONATION AMOUNT | \$5,000 | \$2,500 | \$1,000 | \$500 |
|-----------------------------------|----------------|--------------|--------------|--------------|
| IN RETURN, YOU GET... | | | | |
| Missouri tax credit (50%) | -\$2,500 | -\$1,250 | -\$500 | -\$250 |
| Missouri tax savings** | -\$124 | -\$62 | -\$25 | -\$12 |
| Federal tax savings** | -\$550 | -\$275 | -\$110 | -\$55 |
| NET after-tax cost to you* | \$1,826 | \$913 | \$365 | \$183 |

**Assumes donor itemizes deductions and is in the 22% marginal Federal income tax bracket and 4.95% Missouri income tax bracket.*

***Contribution deduction reduces by amount of Missouri credit per Final Treasury Regulations issued June 2019.*

>>Please consult your tax advisor to determine your exact savings.<<





Prefer to pay online?

2025 SPRING BLING

SPONSORSHIPS & TICKETS

- | | | |
|----------------------------------|--------------------------------|--|
| <input type="checkbox"/> \$5,000 | <input type="checkbox"/> \$500 | <input type="checkbox"/> Donate items for Goody Bags |
| <input type="checkbox"/> \$2,500 | <input type="checkbox"/> \$250 | <input type="checkbox"/> \$600 Table of 8 |
| <input type="checkbox"/> \$1,000 | <input type="checkbox"/> \$100 | <input type="checkbox"/> \$75 Individual Ticket |

CONTACT INFORMATION

Please print business name exactly as you wish it to appear on promotional materials.

INDIVIDUAL OR BUSINESS _____
 CONTACT _____
 ADDRESS _____
 CITY _____ STATE _____ ZIP _____
 EMAIL _____ PHONE _____

AUCTION ITEM DONATION INFORMATION *Please submit donations by March 21, 2025*

- My donation is enclosed. Please pick up my donation.

DESCRIPTION _____
 VALUE _____ PICK UP INSTRUCTIONS _____

PAYMENT METHOD

I/We pledge to sponsor at the level indicated above.

- My check is enclosed, payable to LifeWise StL. Please charge my credit card. Please bill me.

CREDIT CARD NUMBER _____ TYPE _____ SEC. CODE _____ EXP. DATE _____
 NAME AS IT APPEARS ON CARD _____
 BILLING ADDRESS (if different from above) _____
 SIGNATURE _____

REGRETS

I am unable to sponsor, but I would like to donate \$ _____

QUESTIONS

For questions, contact Greta Buck, at gbuck@lifewisestl.org or 314-260-6369

Please submit auction item donations by March 21, 2025

Return to LifeWise StL - 1321 S. 11th St., St. Louis, MO 63104, Attn: Greta Buck

We appreciate your support!